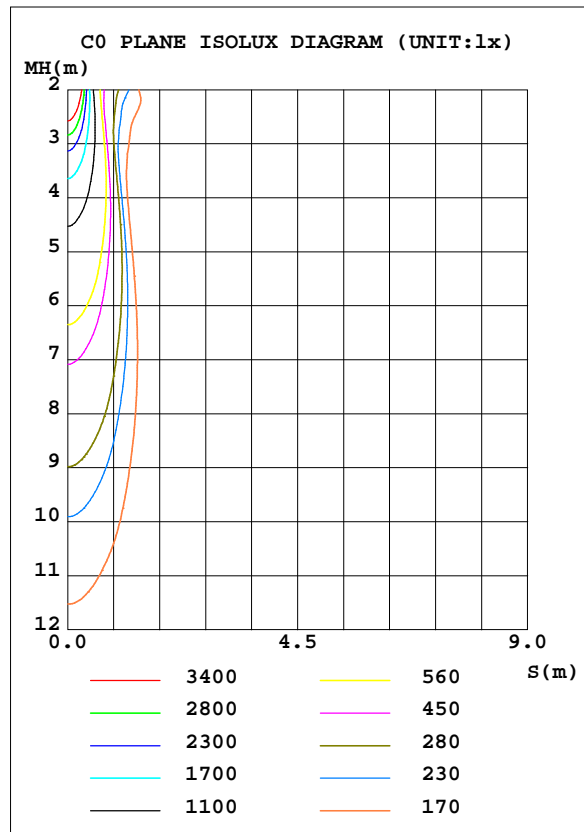
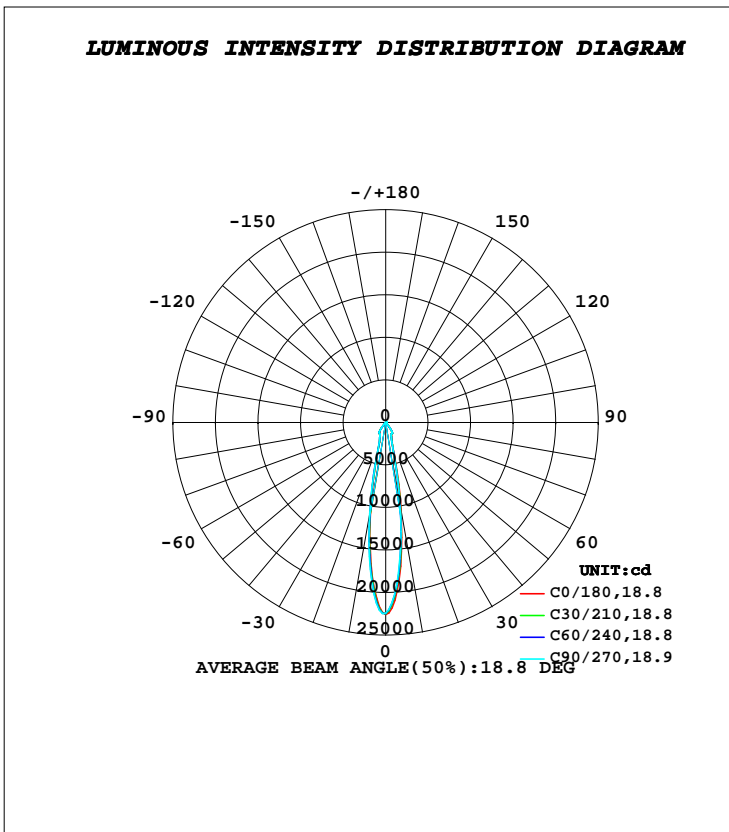


**LUMINAIRE PHOTOMETRIC TEST REPORT**

Test:U:221.70V I:0.1830A P:39.500W PF:0.9730 Freq:50.00Hz		
Lamp Flux:4456.78x1 lm		
Name: NS10-φ180mm-40W	Type: LED	
MFR.: Lumega Group	DIM.: D180*94mm	
	SUR.: D150mm	

DATA OF LAMP		PHOTOMETRIC DATA Eff: 112.83 lm/W			
MODEL		I <sub>max</sub> (cd)	22576	S/MH(C0/180)	0.32
NOMINAL POWER(W)	40	LOR(%)	100.0	S/MH(C90/270)	0.31
RATED VOLTAGE(V)	220	TOTAL FLUX(lm)	4456.8	η UP, DN(C0-180)	1.3, 47.5
NOMINAL FLUX(lm)	4456.78	CIE CLASS	DIRECT	η UP, DN(C180-360)	1.6, 49.6
LAMPS INSIDE	1	η up(%)	2.9	CIBSE SHR NOM	0.00
TEST VOLTAGE(V)	220	η down(%)	97.1	CIBSE SHR MAX	0.30



**C Range: 0 - 360DEG**  
**C Interval: 30.0DEG**  
**Test Speed: HIGH**  
**Temperature:25.3DEG**  
**Operators:DAMIN**  
**Test Date:2022-05-04**

**γ Range: 0 - 180DEG**  
**γ Interval: 1.0DEG**  
**Test System:EVERFINE GO-2000A\_V1 SYSTEM V2.00.443**  
**Humidity:65.0%**  
**Test Distance:8.000m [K=0.7063]**  
**Remarks:**

**ZONAL FLUX DIAGRAM**

**ZONAL FLUX DIAGRAM:**

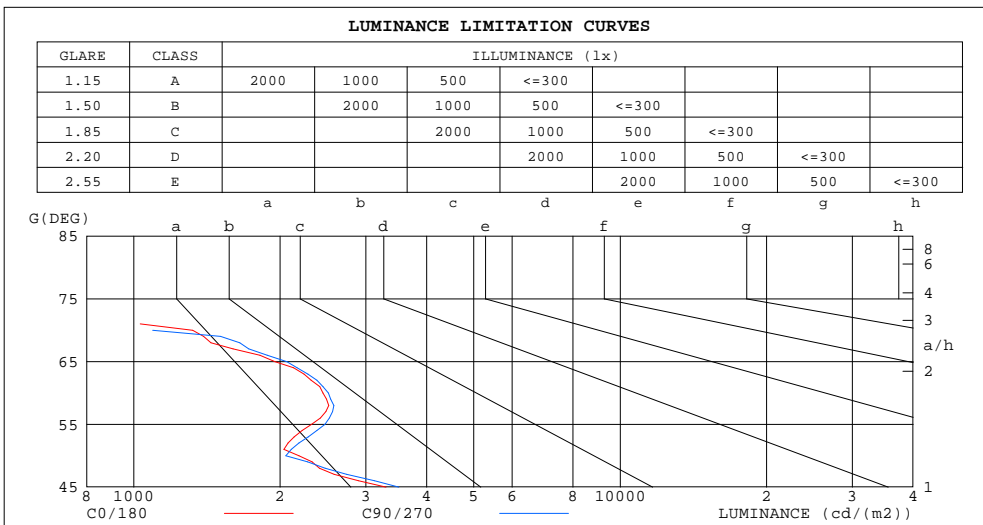
$\gamma$	C0	C45	C90	C135	C180	C225	C270	C315	$\gamma$	$\Phi$ zone	$\Phi$ total	%lum,lamp
10	1041	990.0	969.6	996.1	1036	1068	1087	1075	0- 10	1483	1483	33.3,33.3
20	210.8	203.9	200.8	203.6	207.9	210.1	211.4	211.5	10- 20	1224	2707	60.7,60.7
30	147.8	147.4	147.7	149.4	150.8	150.2	149.1	148.4	20- 30	773.3	3480	78.1,78.1
40	44.27	48.08	51.41	54.67	56.39	53.62	49.69	46.84	30- 40	711.9	4192	94.1,94.1
50	2.472	2.334	2.323	2.530	2.741	2.720	2.634	2.559	40- 50	90.05	4282	96.1,96.1
60	2.155	2.151	2.211	2.396	2.554	2.490	2.365	2.262	50- 60	22.45	4305	96.6,96.6
70	0.7954	0.6327	0.6581	1.033	1.368	1.157	0.8596	0.7782	60- 70	16.15	4321	96.9,96.9
80	0.1006	0.0406	0.0973	0.3582	0.6194	0.6768	0.6187	0.4171	70- 80	3.860	4325	97,97
90	0.1605	0.0872	0.1567	0.4758	0.7960	0.8704	0.8024	0.5535	80- 90	4.763	4329	97.1,97.1
100	0.2731	0.1978	0.2618	0.5687	0.8775	0.9487	0.8836	0.6469	90-100	5.793	4335	97.3,97.3
110	0.6313	0.5672	0.6220	0.8843	1.148	1.206	1.148	0.9474	100-110	7.531	4343	97.4,97.4
120	1.182	1.094	1.154	1.473	1.793	1.856	1.780	1.546	110-120	11.71	4354	97.7,97.7
130	1.848	1.775	1.836	2.129	2.422	2.481	2.412	2.191	120-130	16.05	4371	98.1,98.1
140	3.100	3.071	3.102	3.241	3.372	3.360	3.297	3.212	130-140	20.24	4391	98.5,98.5
150	4.375	4.374	4.414	4.533	4.639	4.625	4.565	4.483	140-150	24.15	4415	99.1,99.1
160	5.211	5.294	5.382	5.491	5.580	5.599	5.558	5.421	150-160	23.16	4438	99.6,99.6
170	4.308	4.355	4.424	4.535	4.640	4.703	4.700	4.554	160-170	14.87	4453	99.9,99.9
180	3.466	3.415	3.397	3.438	3.478	3.437	3.394	3.413	170-180	3.842	4457	100,100
DEG	<b>LUMINOUS INTENSITY:×10cd</b>									<b>UNIT: lm</b>		

**C Range: 0 - 360DEG**  
**C Interval: 30.0DEG**  
**Test Speed: HIGH**  
**Temperature:25.3DEG**  
**Operators:DAMIN**  
**Test Date:2022-05-04**

**$\gamma$  Range: 0 - 180DEG**  
 **$\gamma$  Interval: 1.0DEG**  
**Test System:EVERFINE GO-2000A\_V1 SYSTEM V2.00.443**  
**Humidity:65.0%**  
**Test Distance:8.000m [K=0.7063]**  
**Remarks:**

**LUMINANCE LIMITATION CURVES**

Test:U:221.70V I:0.1830A P:39.500W PF:0.9730 Freq:50.00Hz		
Lamp Flux:4456.78x1 lm		
Name: NS10-φ180mm-40W	Type: LED	
MFR.: Lumega Group	DIM.: D180*94mm	
	SUR.: D150mm	



LUMINANCE cd/(m2)		
G(DEG)	C0/180	C90/270
85	861	834
80	329	318
75	185	177
70	1321	1093
65	1953	2063
60	2449	2512
55	2318	2472
50	2185	2053
45	3299	3509

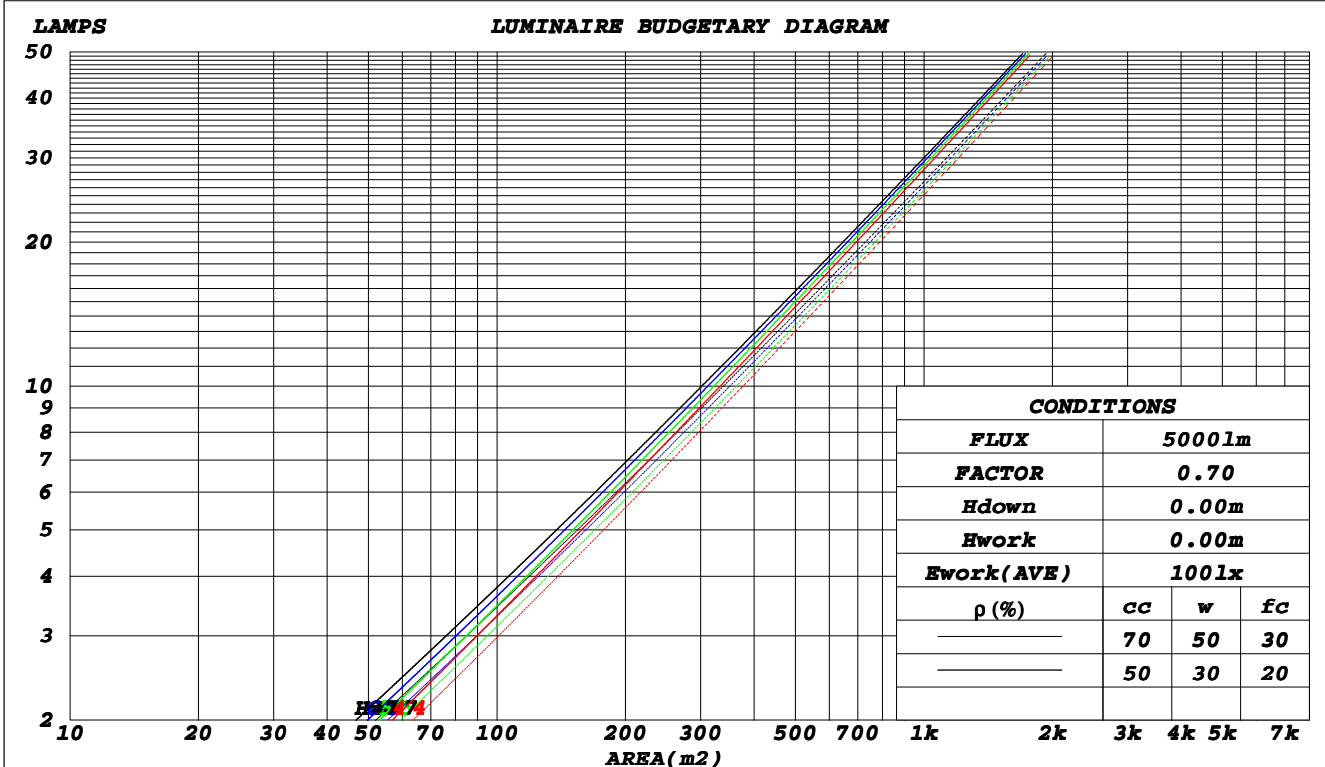
**C Range: 0 - 360DEG**  
**C Interval: 30.0DEG**  
**Test Speed: HIGH**  
**Temperature: 25.3DEG**  
**Operators: DAMIN**  
**Test Date: 2022-05-04**

**γ Range: 0 - 180DEG**  
**γ Interval: 1.0DEG**  
**Test System: EVERFINE GO-2000A\_V1 SYSTEM V2.00.443**  
**Humidity: 65.0%**  
**Test Distance: 8.000m [K=0.7063]**  
**Remarks:**

**CU AND LUMINAIRE BUDGETARY ESTIMATE DIAGRAM**

Test:U:221.70V I:0.1830A P:39.500W PF:0.9730 Freq:50.00Hz		
Lamp Flux:4456.78x1 lm		
Name: NS10-φ180mm-40W	Type: LED	
MFR.: Lumega Group	DIM.: D180*94mm	
	SUR.: D150mm	

ρcc	80%			70%			50%			30%			10%			0
ρw	50%	30%	10%	50%	30%	10%	50%	30%	10%	50%	30%	10%	50%	30%	10%	0
ρfc	20%			20%			20%			20%			20%			0
<b>RCR</b>	<b>RCR:Room Cavity Ratio</b>						<b>Coefficients of Utilization(CU)</b>									
0.0	1.18	1.18	1.18	1.15	1.15	1.15	1.10	1.10	1.10	1.04	1.04	1.04	.99	.99	.99	.97
1.0	1.11	1.09	1.07	1.09	1.07	1.05	1.04	1.03	1.01	1.00	.99	.98	.96	.95	.95	.93
2.0	1.05	1.02	.99	1.03	1.00	.97	.99	.97	.95	.96	.94	.92	.93	.92	.90	.88
3.0	.90	.95	.92	.98	.94	.91	.95	.92	.89	.92	.90	.88	.90	.88	.86	.84
4.0	.95	.90	.87	.93	.89	.86	.91	.87	.85	.89	.86	.83	.87	.84	.82	.81
5.0	.90	.86	.82	.89	.85	.81	.87	.83	.81	.85	.82	.80	.84	.81	.79	.77
6.0	.86	.82	.78	.85	.81	.78	.84	.80	.77	.82	.79	.76	.81	.78	.76	.74
7.0	.83	.78	.75	.82	.78	.74	.81	.77	.74	.79	.76	.73	.78	.75	.73	.71
8.0	.80	.75	.72	.79	.74	.71	.78	.74	.71	.77	.73	.70	.76	.72	.70	.69
9.0	.77	.72	.69	.76	.72	.69	.75	.71	.68	.74	.71	.68	.73	.70	.68	.66
10.0	.74	.69	.66	.74	.69	.66	.73	.69	.66	.72	.68	.66	.71	.68	.65	.64



C Range: 0 - 360DEG  
 C Interval: 30.0DEG  
 Test Speed: HIGH  
 Temperature:25.3DEG  
 Operators:DAMIN  
 Test Date:2022-05-04

γ Range: 0 - 180DEG  
 γ Interval: 1.0DEG  
 Test System:EVERFINE GO-2000A\_V1 SYSTEM V2.00.443  
 Humidity:65.0%  
 Test Distance:8.000m [K=0.7063]  
 Remarks:

**WEC AND CCEC**

Test:U:221.70V I:0.1830A P:39.500W PF:0.9730 Freq:50.00Hz		
Lamp Flux:4456.78x1 lm		
Name: NS10-φ180mm-40W	Type: LED	
MFR.: Lumega Group	DIM.: D180*94mm	
	SUR.: D150mm	

ρ <sub>cc</sub>	80%			70%			50%			30%			10%			0
ρ <sub>w</sub>	50%	30%	10%	50%	30%	10%	50%	30%	10%	50%	30%	10%	50%	30%	10%	0
ρ <sub>fc</sub>	20%			20%			20%			20%			20%			0
<b>RCR</b>	<b>RCR:Room Cavity Ratio</b>						<b>Wall Exitance Coefficients(WEC)</b>									
0.0																
1.0	.155	.088	.028	.147	.084	.027	.133	.076	.024	.120	.069	.022	.108	.063	.020	
2.0	.145	.080	.024	.139	.076	.024	.127	.071	.022	.116	.065	.020	.106	.060	.019	
3.0	.136	.073	.022	.131	.070	.021	.121	.065	.020	.111	.061	.019	.103	.057	.018	
4.0	.128	.067	.020	.124	.065	.019	.115	.061	.018	.107	.057	.017	.099	.054	.016	
5.0	.121	.062	.018	.117	.060	.018	.110	.057	.017	.103	.054	.016	.096	.051	.015	
6.0	.115	.058	.017	.112	.056	.016	.105	.054	.016	.099	.051	.015	.093	.049	.015	
7.0	.109	.054	.015	.106	.053	.015	.100	.051	.015	.095	.049	.014	.090	.047	.014	
8.0	.104	.051	.014	.101	.050	.014	.096	.048	.014	.091	.046	.013	.086	.044	.013	
9.0	.099	.048	.013	.097	.047	.013	.092	.046	.013	.088	.044	.013	.083	.042	.012	
10.0	.095	.046	.013	.093	.045	.013	.089	.043	.012	.084	.042	.012	.081	.041	.012	

ρ <sub>cc</sub>	80%			70%			50%			30%			10%			0
ρ <sub>w</sub>	50%	30%	10%	50%	30%	10%	50%	30%	10%	50%	30%	10%	50%	30%	10%	0
ρ <sub>fc</sub>	20%			20%			20%			20%			20%			0
<b>RCR</b>	<b>RCR:Room Cavity Ratio</b>						<b>Ceiling Cavity Exitance Coefficients(CCEC)</b>									
0.0	.212	.212	.212	.181	.181	.181	.124	.124	.124	.071	.071	.071	.023	.023	.023	
1.0	.192	.179	.169	.164	.154	.145	.112	.106	.100	.065	.061	.058	.021	.020	.019	
2.0	.175	.155	.138	.150	.133	.119	.103	.092	.083	.059	.054	.049	.019	.017	.016	
3.0	.161	.136	.115	.138	.117	.100	.095	.081	.070	.055	.047	.041	.018	.015	.014	
4.0	.149	.121	.099	.128	.104	.086	.088	.073	.060	.051	.043	.036	.016	.014	.012	
5.0	.140	.109	.086	.120	.094	.075	.083	.066	.053	.048	.039	.031	.015	.013	.010	
6.0	.131	.099	.076	.113	.086	.066	.078	.060	.047	.045	.035	.028	.015	.012	.009	
7.0	.124	.091	.068	.107	.079	.059	.074	.055	.042	.043	.033	.025	.014	.011	.008	
8.0	.118	.085	.062	.102	.073	.054	.070	.051	.038	.041	.030	.023	.013	.010	.008	
9.0	.112	.079	.057	.097	.069	.049	.067	.048	.035	.039	.028	.021	.013	.009	.007	
10.0	.108	.074	.052	.093	.065	.046	.064	.046	.033	.038	.027	.019	.012	.009	.006	

**C Range: 0 - 360DEG**  
**C Interval: 30.0DEG**  
**Test Speed: HIGH**  
**Temperature:25.3DEG**  
**Operators:DAMIN**  
**Test Date:2022-05-04**

**γ Range: 0 - 180DEG**  
**γ Interval: 1.0DEG**  
**Test System:EVERFINE GO-2000A\_V1 SYSTEM V2.00.443**  
**Humidity:65.0%**  
**Test Distance:8.000m [K=0.7063]**  
**Remarks:**

**UGR(Unified Glare Rating) Table**

Test:U:221.70V I:0.1830A P:39.500W PF:0.9730 Freq:50.00Hz		
Lamp Flux:4456.78x1 lm		
Name: NS10-φ180mm-40W	Type: LED	
MFR.: Lumega Group	DIM.: D180*94mm	
	SUR.: D150mm	

ceiling/cavity	0.7	0.7	0.5	0.5	0.3	0.7	0.7	0.5	0.5	0.3
walls	0.5	0.3	0.5	0.3	0.3	0.5	0.3	0.5	0.3	0.3
working plane	0.2	0.2	0.2	0.2	0.2	0.2	0.2	0.2	0.2	0.2
Room dimensions	Viewed crosswise					Viewed endwise				
<b>x = 2H y = 2H</b>	17.2	18.0	17.5	18.2	18.4	17.3	18.0	17.6	18.2	18.4
3H	17.1	17.8	17.4	18.0	18.3	17.2	17.8	17.4	18.1	18.3
4H	17.0	17.6	17.3	17.9	18.2	17.1	17.7	17.4	18.0	18.2
6H	16.9	17.5	17.2	17.8	18.1	17.0	17.6	17.3	17.9	18.2
8H	16.9	17.4	17.2	17.7	18.1	16.9	17.5	17.3	17.8	18.1
12H	16.8	17.4	17.2	17.7	18.0	16.9	17.4	17.2	17.8	18.1
<b>4H 2H</b>	17.0	17.6	17.3	17.9	18.2	17.1	17.7	17.4	18.0	18.2
3H	16.8	17.4	17.2	17.7	18.0	16.9	17.5	17.3	17.8	18.1
4H	16.7	17.2	17.1	17.6	17.9	16.8	17.3	17.2	17.7	18.0
6H	16.6	17.1	17.0	17.5	17.9	16.7	17.1	17.1	17.5	17.9
8H	16.6	17.0	17.0	17.4	17.8	16.6	17.1	17.1	17.5	17.9
12H	16.5	16.9	17.0	17.3	17.8	16.6	17.0	17.0	17.4	17.8
<b>8H 4H</b>	16.6	17.0	17.0	17.4	17.8	16.6	17.1	17.1	17.5	17.9
6H	16.4	16.8	16.9	17.2	17.7	16.5	16.9	17.0	17.3	17.8
8H	16.4	16.7	16.9	17.2	17.7	16.5	16.8	16.9	17.2	17.7
12H	16.3	16.6	16.8	17.1	17.6	16.4	16.7	16.9	17.1	17.7
<b>12H 4H</b>	16.5	16.9	17.0	17.3	17.8	16.6	17.0	17.0	17.4	17.8
6H	16.4	16.7	16.9	17.2	17.7	16.4	16.8	16.9	17.2	17.7
8H	16.3	16.6	16.8	17.1	17.6	16.4	16.7	16.9	17.1	17.7
<b>Variations with the observer position at spacings(CIE Pub.117):</b>										
<b>S = 1.0H</b>	+ 4.1 / -11.8					+ 4.1 / -12.0				
1.5H	+ 6.9 / -11.7					+ 6.9 / -13.0				
2.0H	+ 0.7 / - 1.8					+ 1.0 / - 1.9				

CIE Pub.117, 4457 lm Total Lamp Luminous Flux Corrected (8log(F/F0) = 5.2)  
 Area: 0.0176 m2

**C Range: 0 - 360DEG**  
**C Interval: 30.0DEG**  
**Test Speed: HIGH**  
**Temperature:25.3DEG**  
**Operators:DAMIN**  
**Test Date:2022-05-04**

**γ Range: 0 - 180DEG**  
**γ Interval: 1.0DEG**  
**Test System:EVERFINE GO-2000A\_V1 SYSTEM V2.00.443**  
**Humidity:65.0%**  
**Test Distance:8.000m [K=0.7063]**  
**Remarks:**

**UTILIZATION FACTORS TABLE**

Test:U:221.70V I:0.1830A P:39.500W PF:0.9730 Freq:50.00Hz Lamp Flux:4456.78x1 lm		
Name: NS10-φ180mm-40W	Type: LED	
MFR.: Lumega Group	DIM.: D180*94mm	
	SUR.: D150mm	

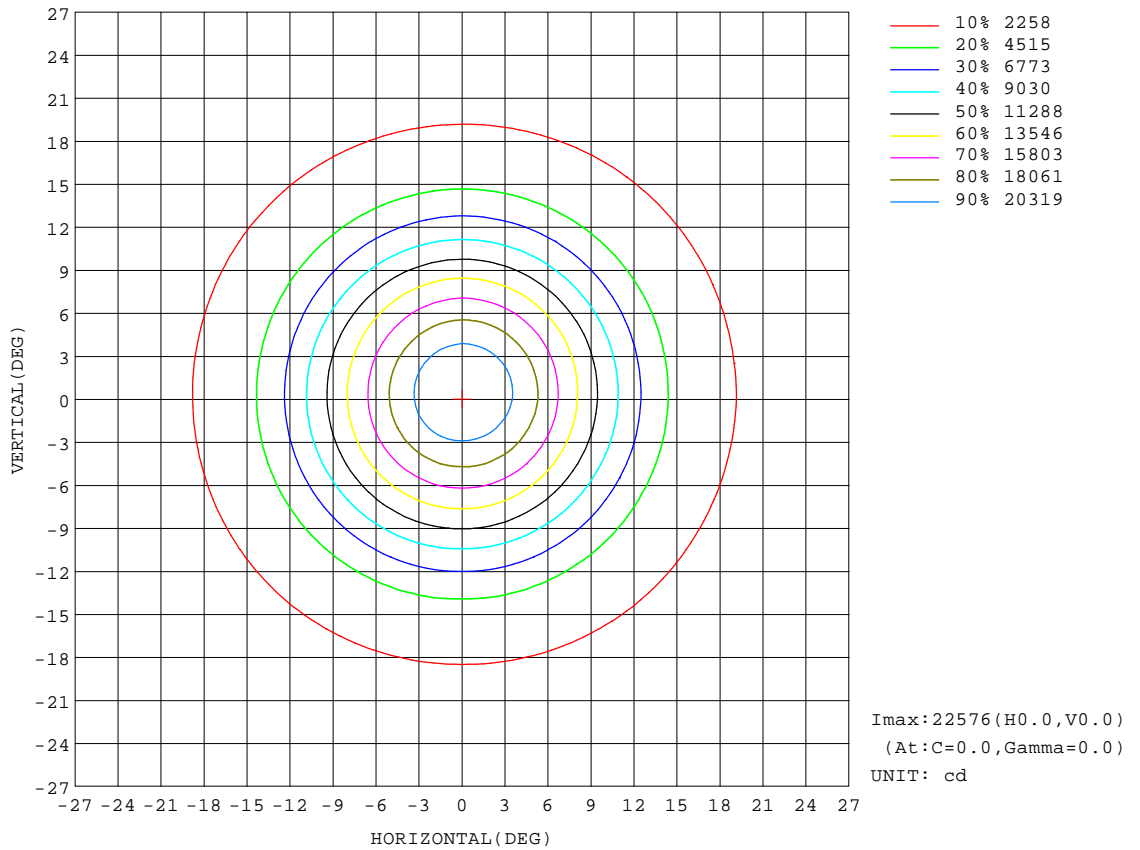
REFLECTANCE										
Ceiling	0.8	0.8	0.8	0.7	0.7	0.7	0.5	0.5	0.5	0
Walls	0.7	0.5	0.3	0.7	0.5	0.3	0.7	0.5	0.3	0
Working plane	0.2	0.2	0.2	0.2	0.2	0.2	0.2	0.2	0.2	0
<b>ROOM INDEX</b>	<b>UTILIZATION FACTORS(PERCENT) <math>k(RI) \times RCR = 5</math></b>									
<b>k = 0.60</b>	88	82	78	87	82	78	86	81	78	74
<b>0.80</b>	95	89	86	94	89	86	93	88	85	81
<b>1.00</b>	99	94	90	98	93	90	96	93	89	85
<b>1.25</b>	103	98	95	102	97	94	100	96	93	89
<b>1.50</b>	106	101	98	104	100	97	102	98	96	91
<b>2.00</b>	108	104	101	106	103	100	103	100	98	92
<b>2.50</b>	110	106	103	108	105	102	104	102	100	93
<b>3.00</b>	111	108	105	109	106	104	105	103	101	94
<b>4.00</b>	113	110	108	111	109	107	107	105	104	96
<b>5.00</b>	114	112	110	112	110	109	108	106	105	97
<b>ROOM INDEX</b>	<b>UF(total)</b>									<b>Direct</b>
<b>According to DIN EN 13032-2 2004</b>			<b>Suspended</b>					<b>SHRNOM = 1.25</b>		

**C Range: 0 - 360DEG**  
**C Interval: 30.0DEG**  
**Test Speed: HIGH**  
**Temperature:25.3DEG**  
**Operators:DAMIN**  
**Test Date:2022-05-04**

**γ Range: 0 - 180DEG**  
**γ Interval: 1.0DEG**  
**Test System:EVERFINE GO-2000A\_V1 SYSTEM V2.00.443**  
**Humidity:65.0%**  
**Test Distance:8.000m [K=0.7063]**  
**Remarks:**

**ISOCANDELA DIAGRAM**

Test:U:221.70V I:0.1830A P:39.500W PF:0.9730 Freq:50.00Hz		
Lamp Flux:4456.78x1 lm		
Name: NS10-φ180mm-40W	Type: LED	
MFR.: Lumega Group	DIM.: D180*94mm	
	SUR.: D150mm	



**C Range: 0 - 360DEG**  
**C Interval: 30.0DEG**  
**Test Speed: HIGH**  
**Temperature: 25.3DEG**  
**Operators: DAMIN**  
**Test Date: 2022-05-04**

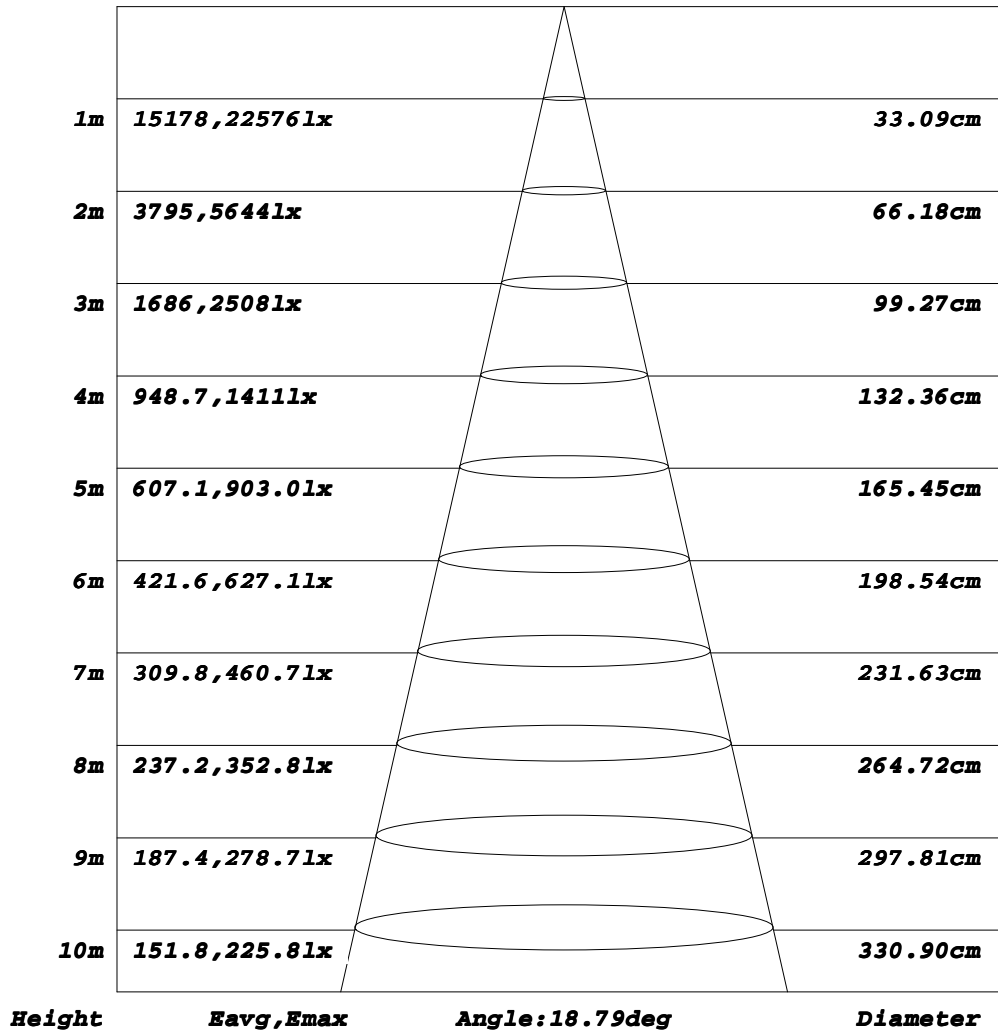
**γ Range: 0 - 180DEG**  
**γ Interval: 1.0DEG**  
**Test System: EVERFINE GO-2000A\_V1 SYSTEM V2.00.443**  
**Humidity: 65.0%**  
**Test Distance: 8.000m [K=0.7063]**  
**Remarks:**



**AAI Figure**

Test:U:221.70V I:0.1830A P:39.500W PF:0.9730 Freq:50.00Hz		
Lamp Flux:4456.78x1 lm		
Name: NS10-φ180mm-40W	Type: LED	
MFR.: Lumega Group	DIM.: D180*94mm	
	SUR.: D150mm	

**Flux out:1483 lm**



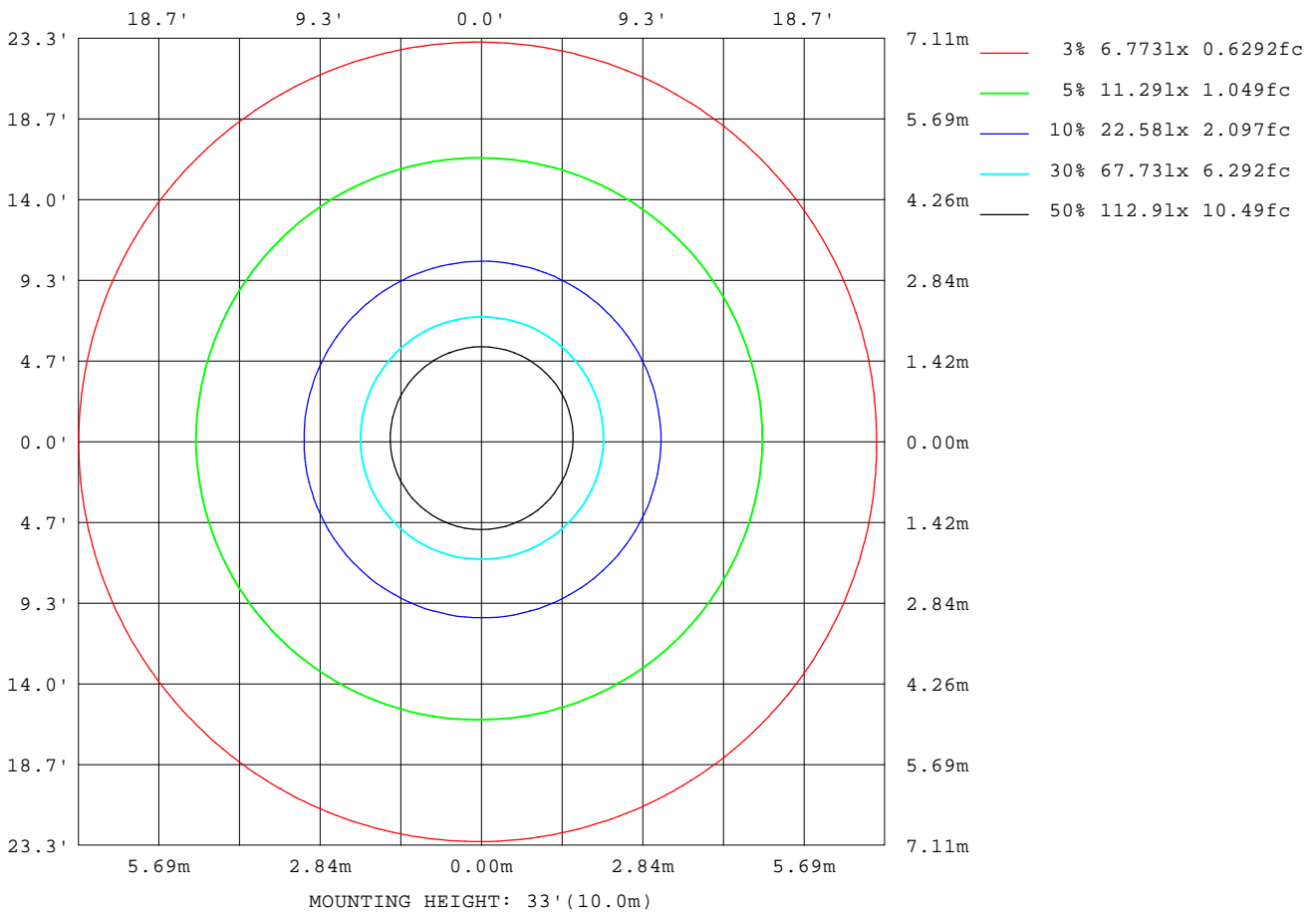
Note: The Curves indicate the illuminated area and the average illumination when the luminaire is at different distance.

**C Range: 0 - 360DEG**  
**C Interval: 30.0DEG**  
**Test Speed: HIGH**  
**Temperature: 25.3DEG**  
**Operators: DAMIN**  
**Test Date: 2022-05-04**

**γ Range: 0 - 180DEG**  
**γ Interval: 1.0DEG**  
**Test System: EVERFINE GO-2000A\_V1 SYSTEM V2.00.443**  
**Humidity: 65.0%**  
**Test Distance: 8.000m [K=0.7063]**  
**Remarks:**

**ISOLUX DIAGRAM**

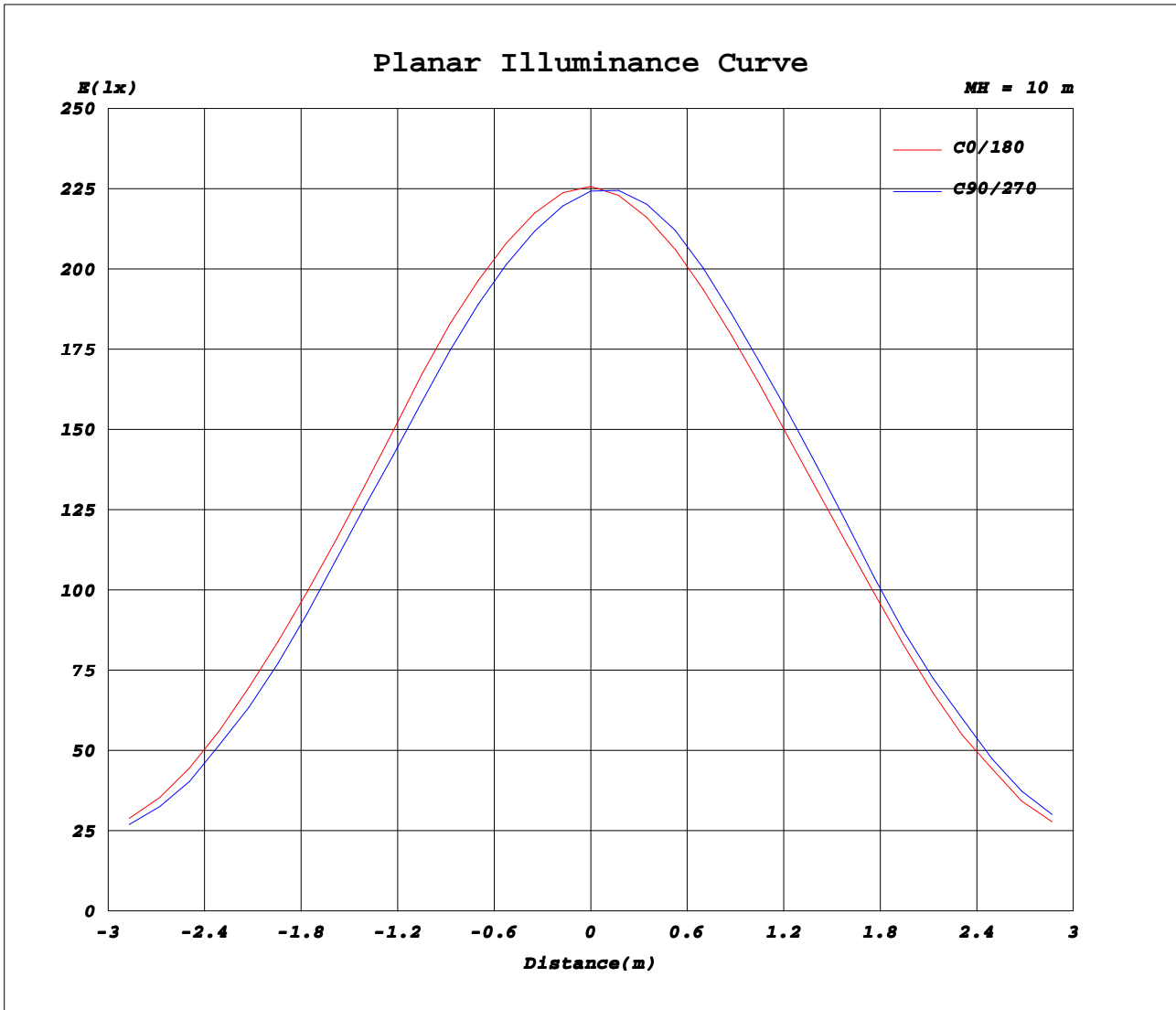
Test:U:221.70V I:0.1830A P:39.500W PF:0.9730 Freq:50.00Hz		
Lamp Flux:4456.78x1 lm		
Name: NS10-φ180mm-40W	Type: LED	
MFR.: Lumega Group	DIM.: D180*94mm	
	SUR.: D150mm	



**C Range: 0 - 360DEG**  
**C Interval: 30.0DEG**  
**Test Speed: HIGH**  
**Temperature: 25.3DEG**  
**Operators: DAMIN**  
**Test Date: 2022-05-04**

**γ Range: 0 - 180DEG**  
**γ Interval: 1.0DEG**  
**Test System: EVERFINE GO-2000A\_V1 SYSTEM V2.00.443**  
**Humidity: 65.0%**  
**Test Distance: 8.000m [K=0.7063]**  
**Remarks:**

**Planar Illuminance Curve**



**C Range: 0 - 360DEG**  
**C Interval: 30.0DEG**  
**Test Speed: HIGH**  
**Temperature: 25.3DEG**  
**Operators: DAMIN**  
**Test Date: 2022-05-04**

**γ Range: 0 - 180DEG**  
**γ Interval: 1.0DEG**  
**Test System: EVERFINE GO-2000A\_V1 SYSTEM V2.00.443**  
**Humidity: 65.0%**  
**Test Distance: 8.000m [K=0.7063]**  
**Remarks:**

**LUMINOUS DISTRIBUTION INTENSITY DATA**

Test:U:221.70V I:0.1830A P:39.500W PF:0.9730 Freq:50.00Hz Lamp Flux:4456.78x1 lm		
Name: NS10-φ180mm-40W	Type: LED	
MFR.: Lumega Group	DIM.: D180*94mm	
	SUR.: D150mm	

Table--1

UNIT: x10cd

C (DEG) \ γ (DEG)	0	30	60	90	120	150	180	210	240	270	300	330							
0	2258	2249	2245	2243	2247	2253	2258	2253	2247	2243	2245	2249							
5	1851	1809	1781	1767	1774	1792	1815	1842	1866	1883	1884	1873							
10	1041	1002	978	970	984	1008	1036	1059	1077	1087	1083	1067							
15	394	377	367	362	365	371	381	394	407	415	414	407							
20	211	206	202	201	202	205	208	210	211	211	212	211							
25	163	160	159	159	161	163	164	165	165	165	164	163							
30	148	147	147	148	149	150	151	151	150	149	149	148							
35	121	123	125	126	128	129	130	129	127	126	124	123							
40	44.3	46.9	49.3	51.4	53.8	55.6	56.4	54.8	52.4	49.7	47.7	45.9							
45	4.11	4.13	4.22	4.37	4.67	4.96	5.17	5.03	4.79	4.52	4.36	4.22							
50	2.47	2.36	2.31	2.32	2.45	2.61	2.74	2.74	2.70	2.63	2.59	2.53							
55	2.34	2.36	2.41	2.49	2.66	2.81	2.91	2.83	2.70	2.55	2.46	2.39							
60	2.16	2.14	2.16	2.21	2.33	2.46	2.55	2.53	2.46	2.37	2.30	2.23							
65	1.45	1.44	1.46	1.53	1.71	1.88	2.00	1.93	1.80	1.65	1.57	1.50							
70	0.80	0.66	0.61	0.66	0.90	1.16	1.37	1.25	1.06	0.86	0.79	0.77							
75	0.08	0.04	0.04	0.08	0.21	0.36	0.49	0.54	0.54	0.49	0.40	0.26							
80	0.10	0.04	0.04	0.10	0.26	0.45	0.62	0.68	0.68	0.62	0.50	0.33							
85	0.13	0.06	0.06	0.13	0.32	0.53	0.73	0.79	0.80	0.73	0.60	0.40							
90	0.16	0.09	0.09	0.16	0.36	0.59	0.80	0.87	0.87	0.80	0.66	0.45							
95	0.20	0.13	0.12	0.19	0.40	0.63	0.83	0.90	0.91	0.84	0.70	0.48							
100	0.27	0.20	0.20	0.26	0.46	0.68	0.88	0.95	0.95	0.88	0.75	0.55							
105	0.41	0.34	0.33	0.39	0.58	0.79	0.97	1.04	1.04	0.98	0.85	0.66							
110	0.63	0.57	0.57	0.62	0.79	0.98	1.15	1.21	1.21	1.15	1.03	0.86							
115	0.91	0.84	0.84	0.90	1.07	1.27	1.44	1.50	1.49	1.43	1.31	1.14							
120	1.18	1.10	1.09	1.15	1.36	1.59	1.79	1.86	1.85	1.78	1.65	1.45							
125	1.46	1.37	1.36	1.43	1.64	1.89	2.11	2.18	2.18	2.11	1.96	1.74							
130	1.85	1.78	1.77	1.84	2.02	2.23	2.42	2.48	2.48	2.41	2.29	2.10							
135	2.40	2.36	2.37	2.41	2.54	2.67	2.79	2.83	2.83	2.78	2.69	2.57							
140	3.10	3.07	3.07	3.10	3.19	3.29	3.37	3.37	3.35	3.30	3.24	3.18							
145	3.77	3.75	3.75	3.77	3.85	3.93	4.00	4.00	3.98	3.94	3.89	3.84							
150	4.38	4.37	4.38	4.41	4.49	4.57	4.64	4.64	4.61	4.56	4.51	4.45							
155	4.90	4.93	4.96	5.01	5.08	5.14	5.19	5.20	5.17	5.13	5.07	5.00							
160	5.21	5.27	5.32	5.38	5.46	5.53	5.58	5.60	5.60	5.56	5.48	5.36							
165	5.06	5.08	5.12	5.18	5.27	5.36	5.45	5.51	5.53	5.51	5.42	5.27							
170	4.31	4.34	4.37	4.42	4.50	4.57	4.64	4.69	4.72	4.70	4.62	4.49							
175	3.70	3.64	3.61	3.62	3.69	3.78	3.86	3.87	3.86	3.83	3.80	3.76							
180	3.47	3.43	3.40	3.40	3.42	3.45	3.48	3.45	3.42	3.39	3.40	3.43							

**C Range: 0 - 360DEG**  
**C Interval: 30.0DEG**  
**Test Speed: HIGH**  
**Temperature: 25.3DEG**  
**Operators: DAMIN**  
**Test Date: 2022-05-04**

**γ Range: 0 - 180DEG**  
**γ Interval: 1.0DEG**  
**Test System: EVERFINE GO-2000A\_V1 SYSTEM V2.00.443**  
**Humidity: 65.0%**  
**Test Distance: 8.000m [K=0.7063]**  
**Remarks:**